

PORTFOLIO

Alfred Maher Mehchi

Architecture Portfolio

2026

Table of contents:

- 4. CV
- 6-9. **The house as a city**
- 10. Analysis : Muro dos Cobertos
- 11. Analysis : Casa Nobre do Cais Novo
- 12-15. **Casa Nobre do Remo**
- 16-17. Analysis : Malcolm Willey House - Frank Lloyd Wright
- 18-19. **Still life and compositions**
- 20. Analysis : Villa Dall'Ava - Rem Koolhaas
- 21. **A reimagining of Villa Le Sextant by Le Corbusier**
- 22-23. **The Tablar and the cinema screen**

Alfred Maher Mehchi

Architecture student

CONTACT

Lausanne, Switzerland
+41 076 786 53 33
alfredmehchi@gmail.com

EDUCATION

2023-Present
Bachelor of Architecture
EPFL - Lausanne, Switzerland

DESIGN SKILLS

Architectural drawing
Physical model making
Parametric design
Diagramming

SOFTWARE

Modeling / BIM
Rhino
Archicad
Vectorworks

Rendering
Twinmotion

Parametric
Grasshopper

Adobe suite
Adobe Photoshop
Adobe Illustrator
Adobe InDesign

TECHNICAL TOOLS

TopSolid
Flixo
Lesosai
Dial+

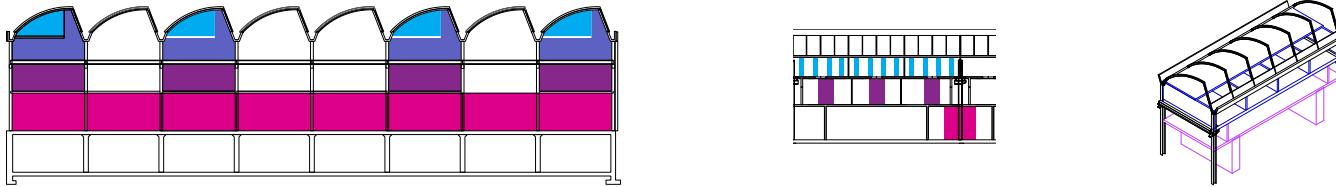
LANGUAGES

English — Fluent
French — Fluent
Arabic — Fluent

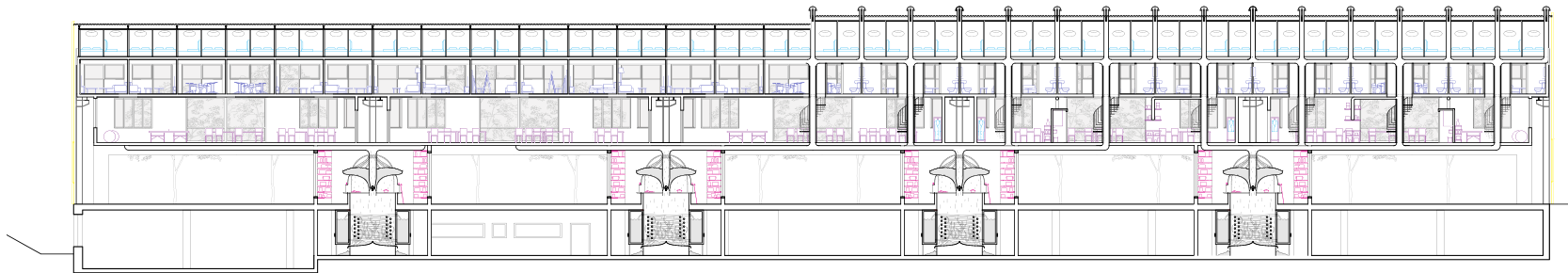
PROJECTS

The House as a City : Common Roots

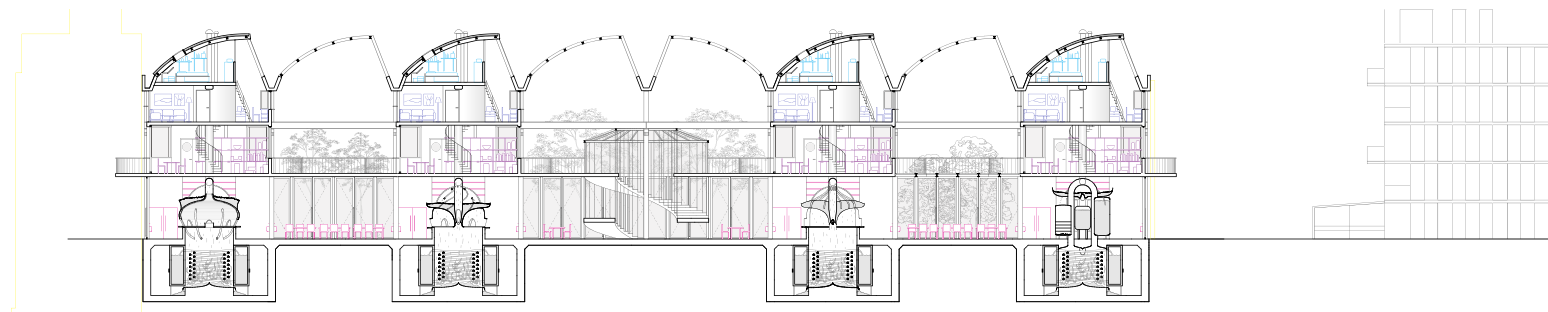
Common Roots is a renovation project of an abandoned industrial hangar in ecublens, Switzerland. The proposal is structured around a progression of shared spaces. As the building rises, the program gradually fragments, like the branches of a tree, offering increasing levels of privacy.



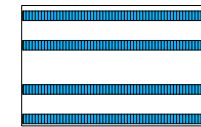
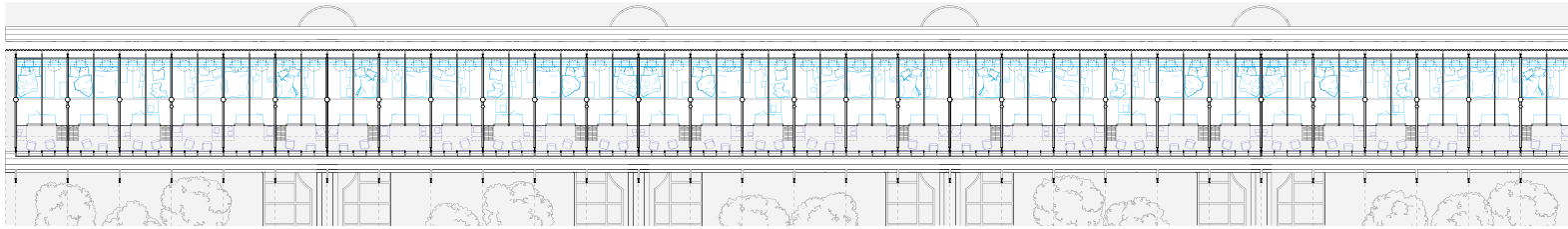
Upper levels introduce shared living units for groups of twelve, connected to smaller studio spaces for two. Beneath the sawtooth roof, private sleeping areas are accessed from these studios.



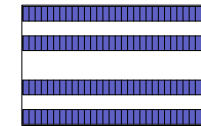
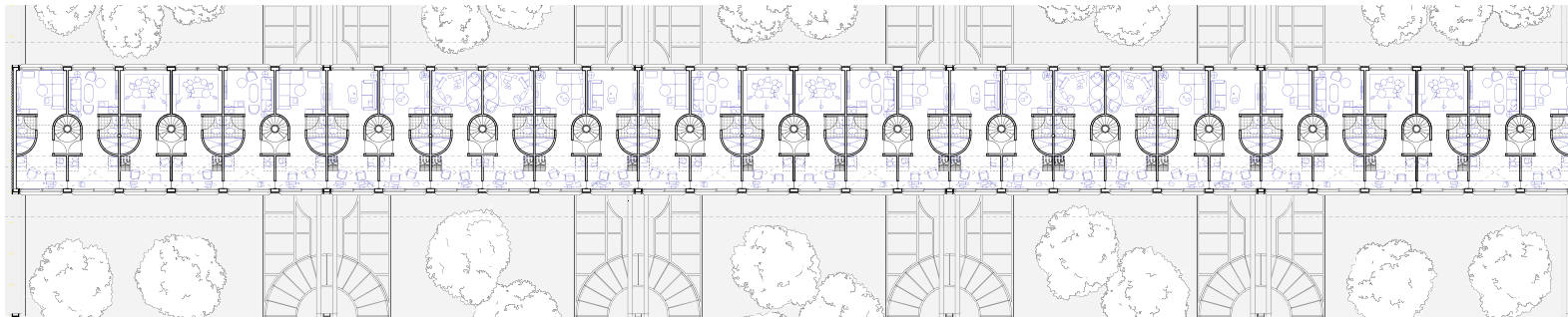
The ground floor acts as a social hub to both residents and the wider community, with large flexible public spaces



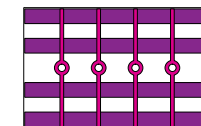
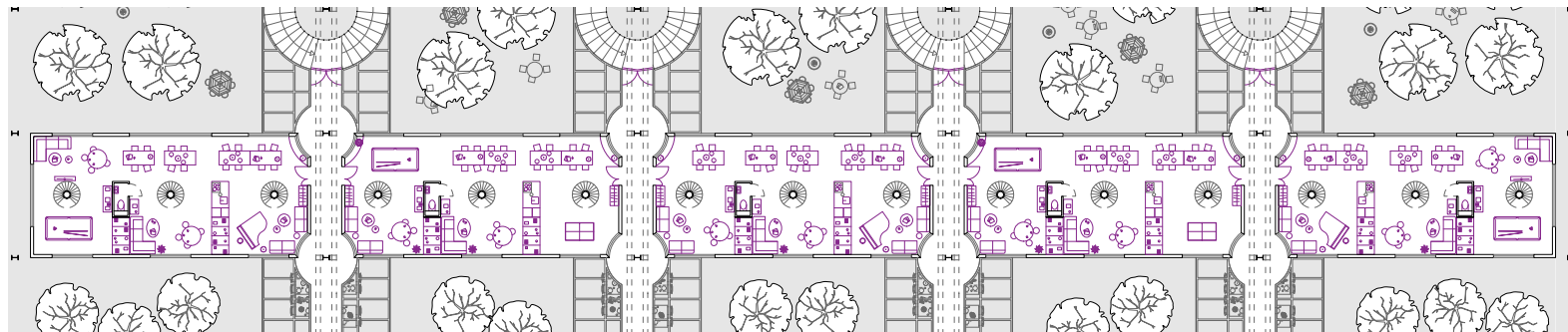
The project is organized through a system of longitudinal strips across the upper floors, intersected by perpendicular axes on the ground level. Four communal kitchens form the core of collective life, serving 240 inhabitants.



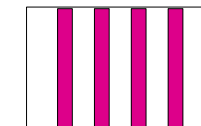
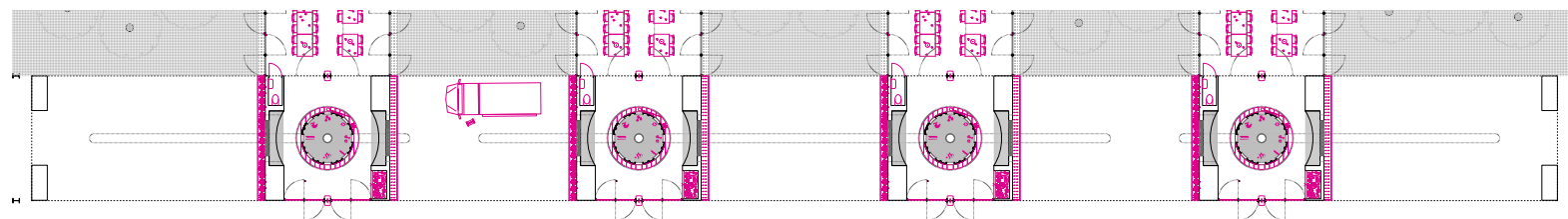
Level 3



Level 2



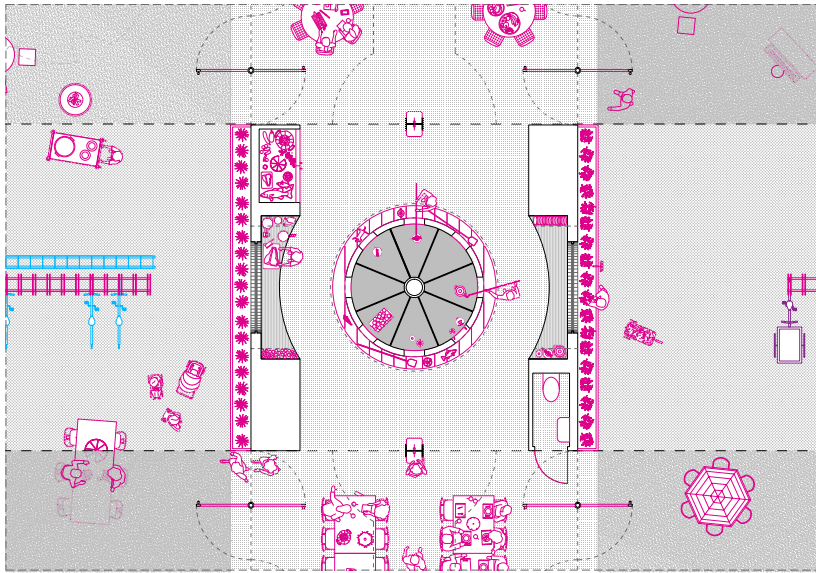
Level 1



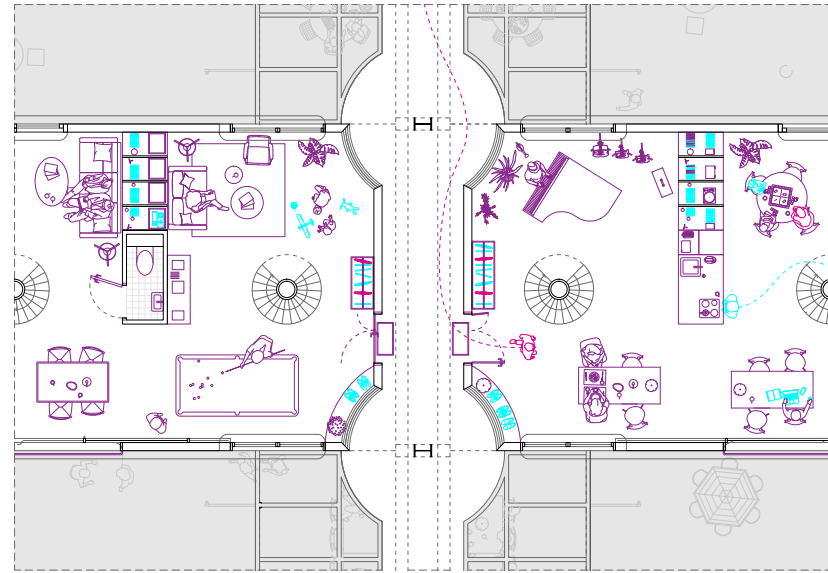
Level 0

The House as a City : Common Roots

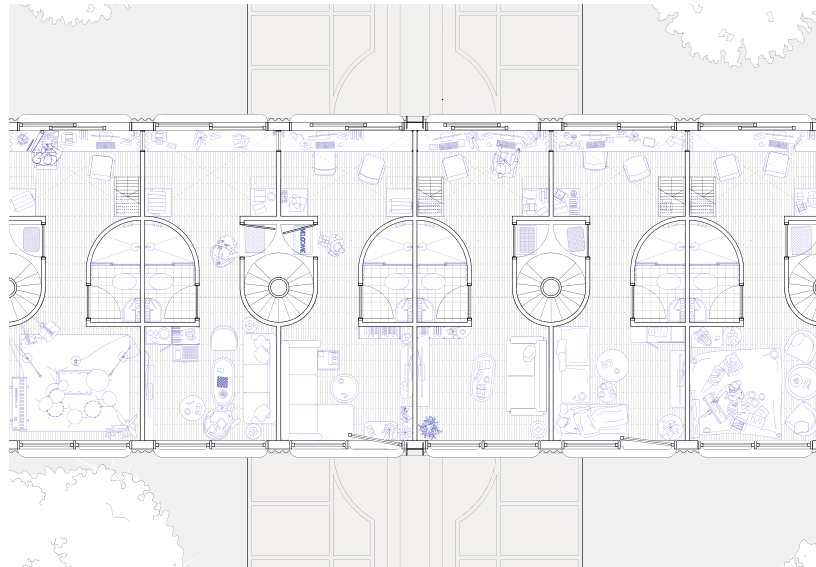
Level 0



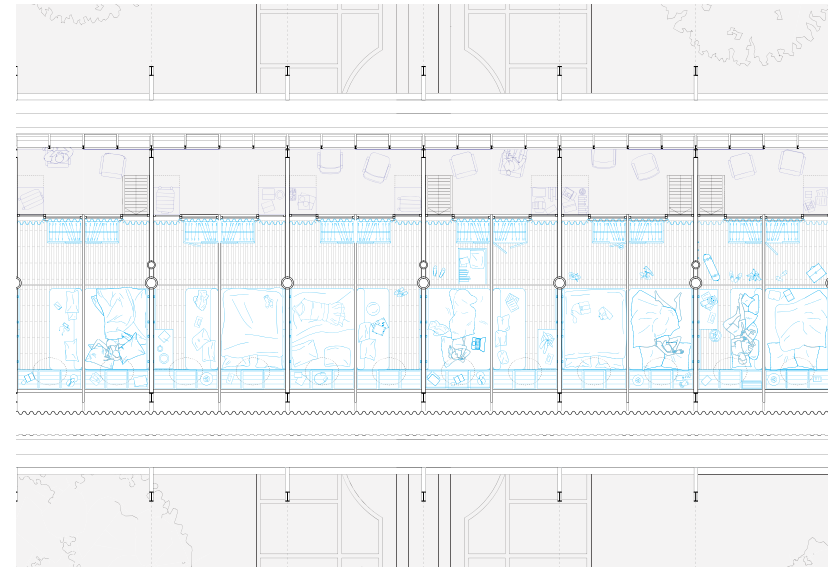
Level 1

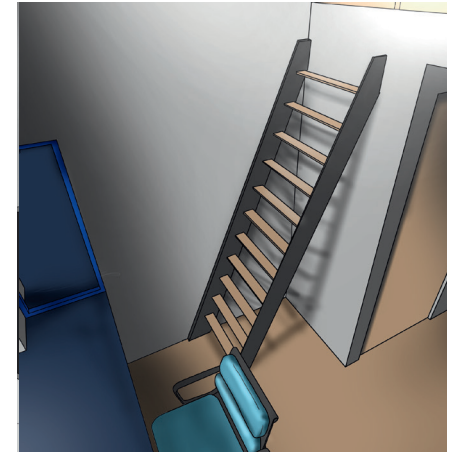
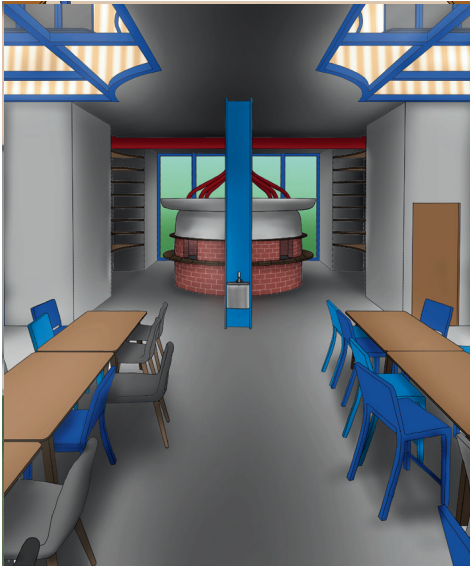


Level 2



Level 3





Level 0

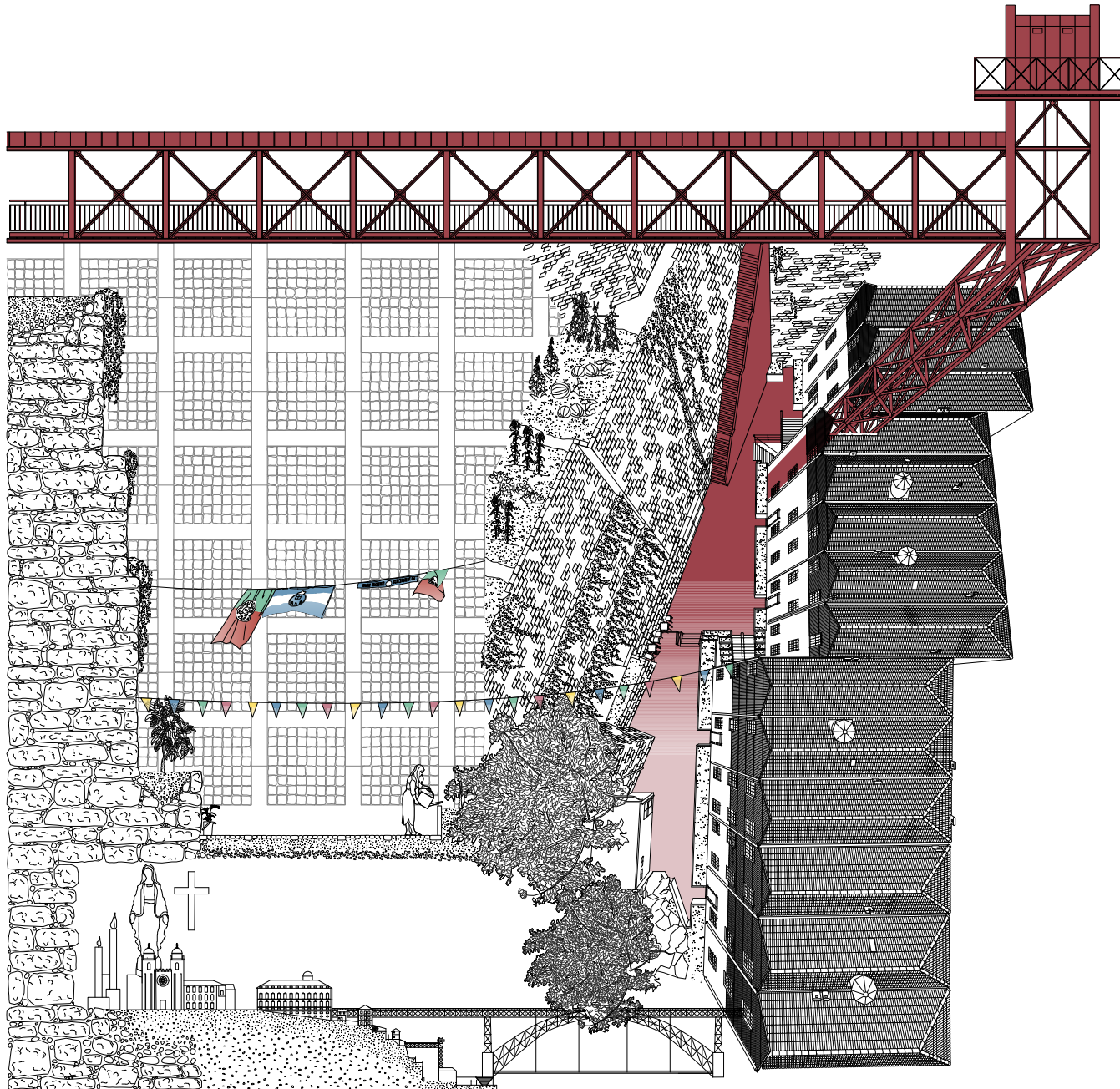
Level 1

Level 2

Level 3

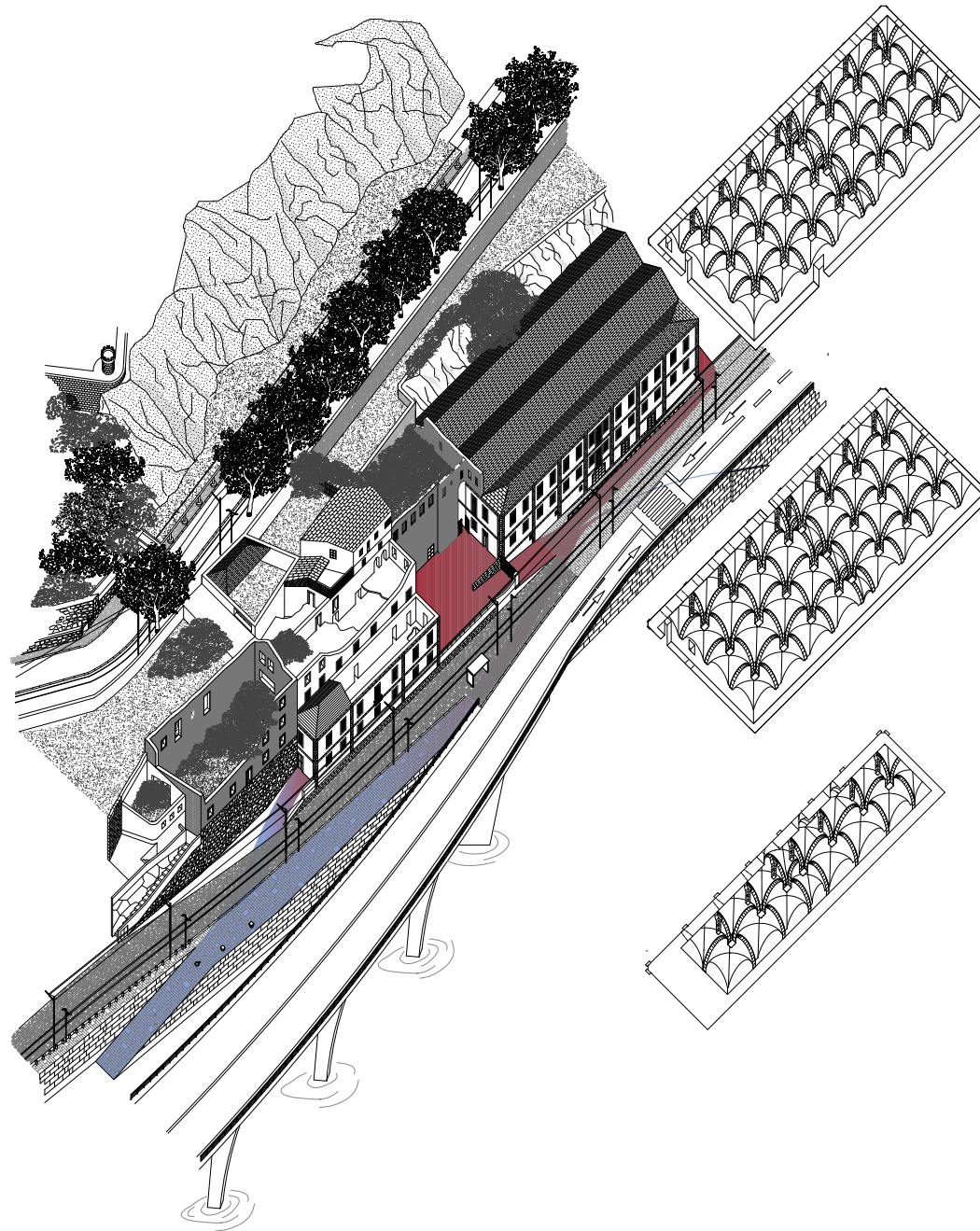
Analysis : Muro dos Cobertos – Bacalhoeiros, 1368 (Porto)

The basis of this analysis is this feeling of clashing scales and the balance between what is public and private, especially in such a tourist-centered area of the city. A sinking feeling settles in anyone walking through this courtyard: the feeling of being miniscule in such an out-of-scale vertical space.



Analysis : Casa Nobre do Cais Novo

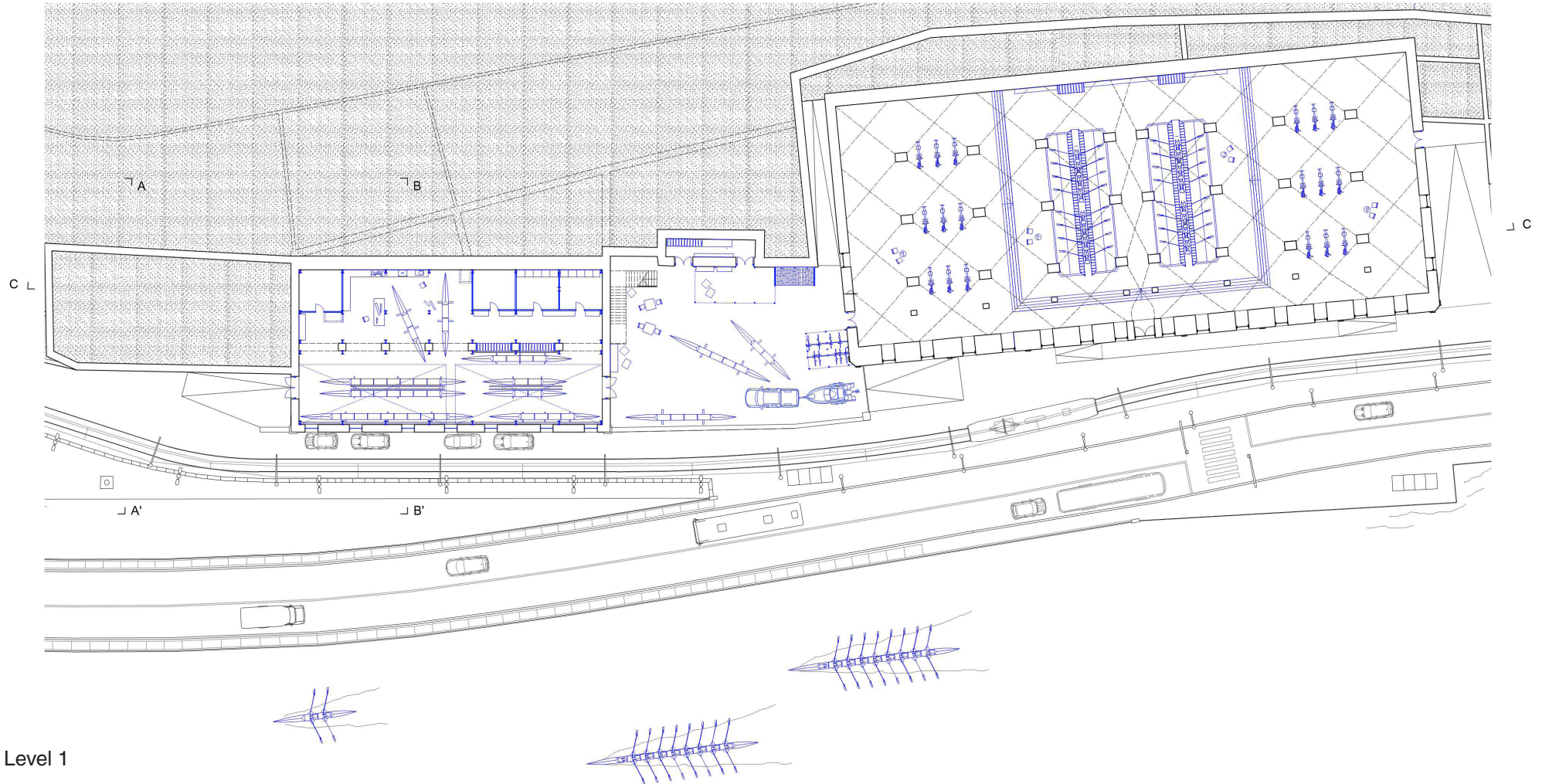
The notion of space is a striking one when it comes to this site. The ruined palace on the left can only transmit echoes of its past while the old wine depot tears through the abstract with its defined brick arches and vaults. We can see the stoic elements that survived the test of time and modern infrastructure: the multiple ramps where we can almost hear barrels of wine still rolling.



Casa Nobre do Remo

By observing the strategic position of the site - its relationship to the docks, the shoreline, and the access ramps - the transformation of the Casa Nobre do Cais Novo into the Casa Nobre do Remo emerged naturally.

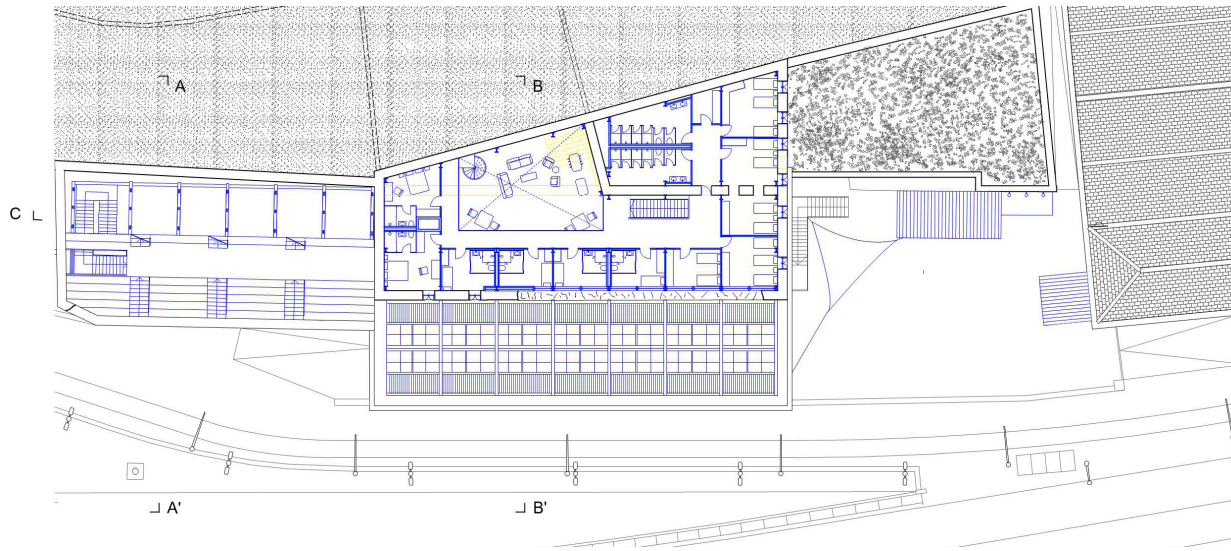
The project proposes a rowing club that takes advantage of the spatial freedom offered by the existing ruins, while preserving the integrity of the historic façade. The exterior envelope is maintained, and a new internal structure is inserted within its boundaries, both to accommodate the new program and to reinforce the fragile existing fabric.



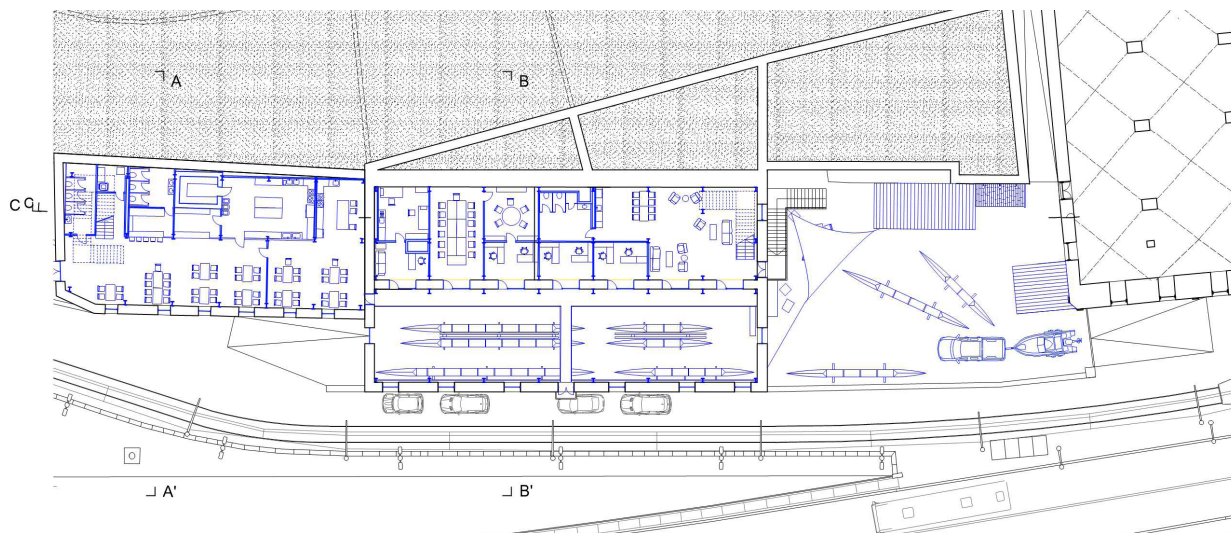
Level 1

The former wine depot is preserved in its original state, honoring its vast, uninterrupted interior and the sense of monumentality created by its vaults. This space is reinterpreted as a “temple of rowing,” housing training basins and exercise equipment, while maintaining its powerful spatial identity.

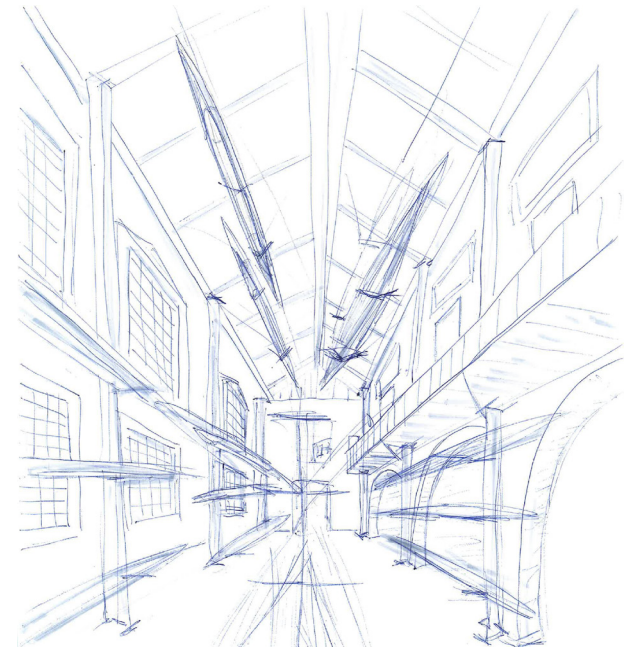
The spatial organization plays with variations in height: the boat storage hall and the main communal space are conceived as large, open volumes, topped by a glazed roof that allows light to penetrate deep into the building. Circulation for the upper levels is integrated through elevated walkways overlooking these spaces.



Level 3



Level 2

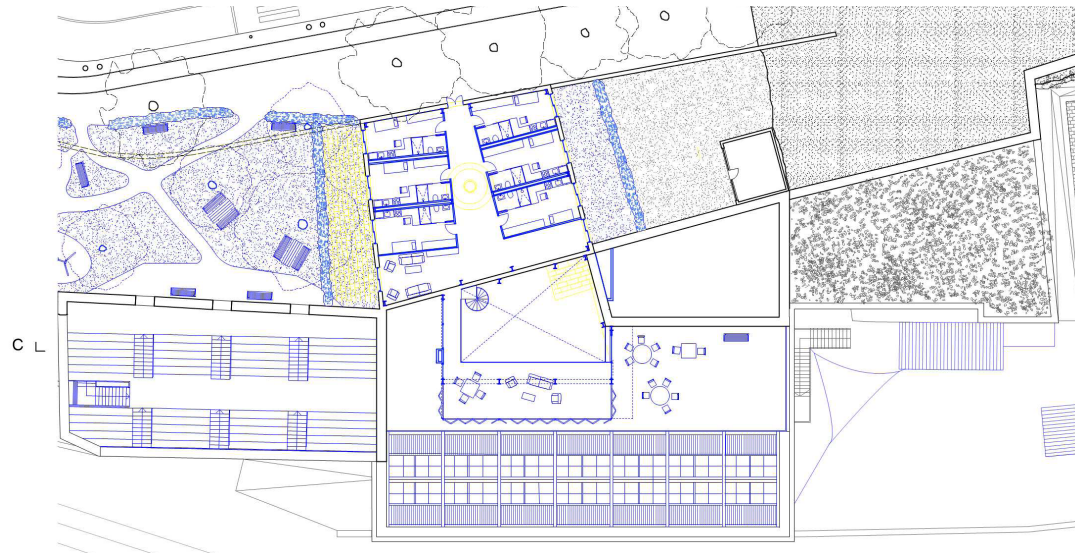


Sketch of the boat storage hall



Sketch of the cafeteria beneath the bleachers.

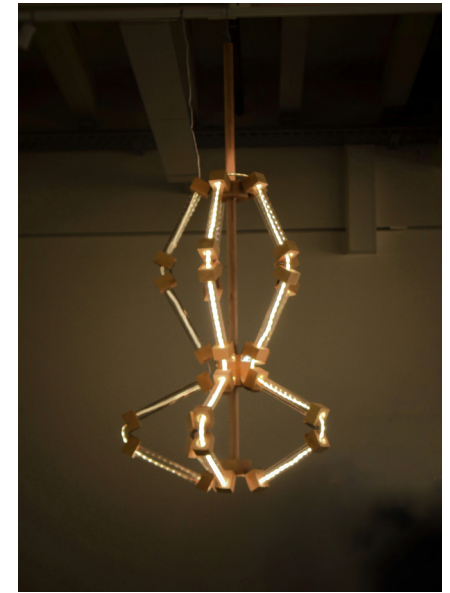
Casa Nobre do Remo



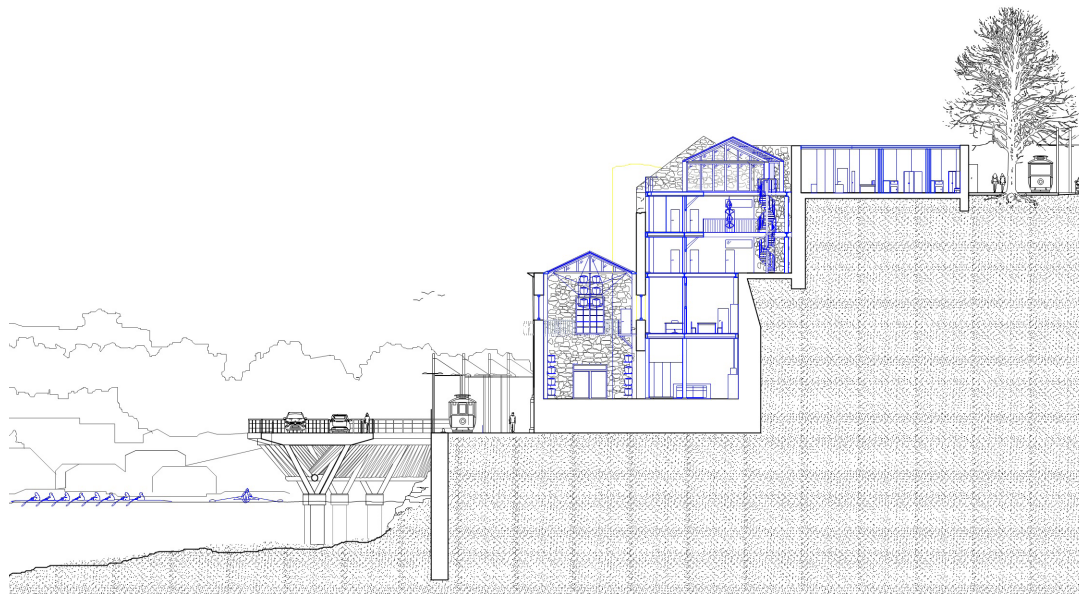
Level 4



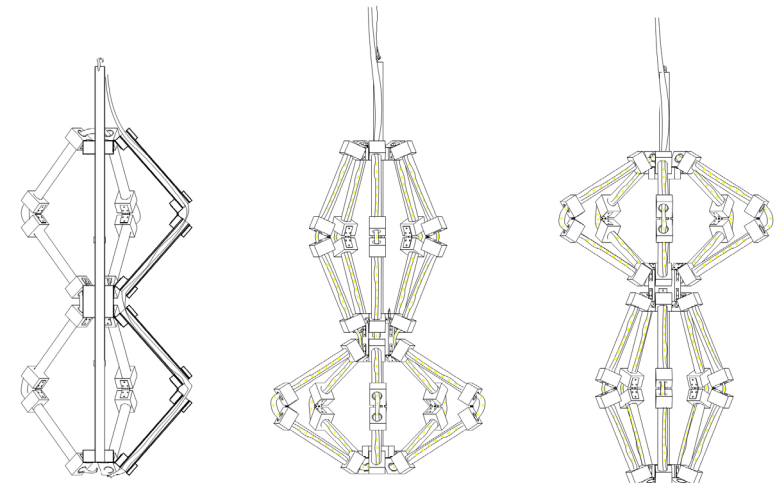
Sketch of the main common room.

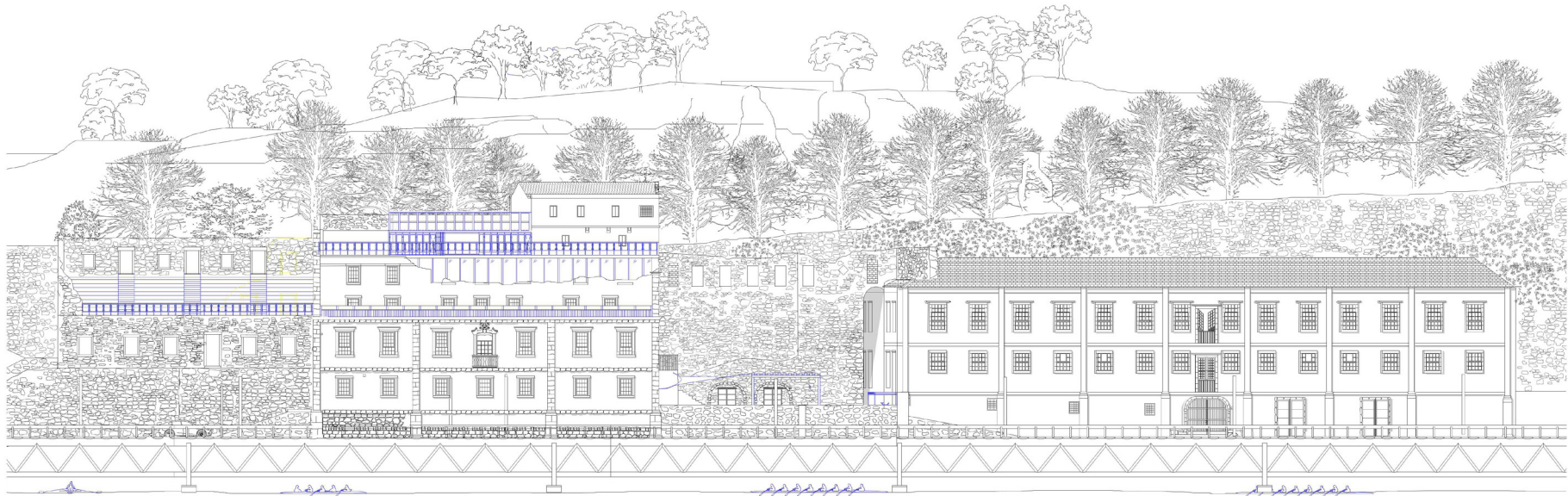


This lamp was designed to evoke the rhythmic movement of rowing paddles through water.

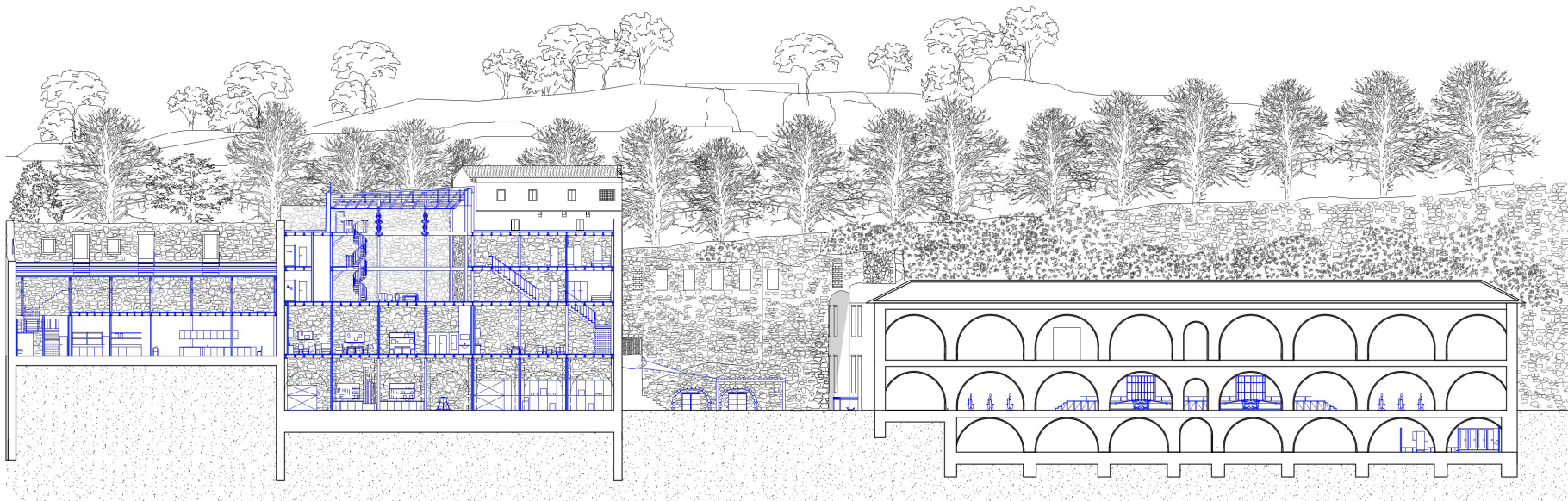


Section BB'





Main elevation

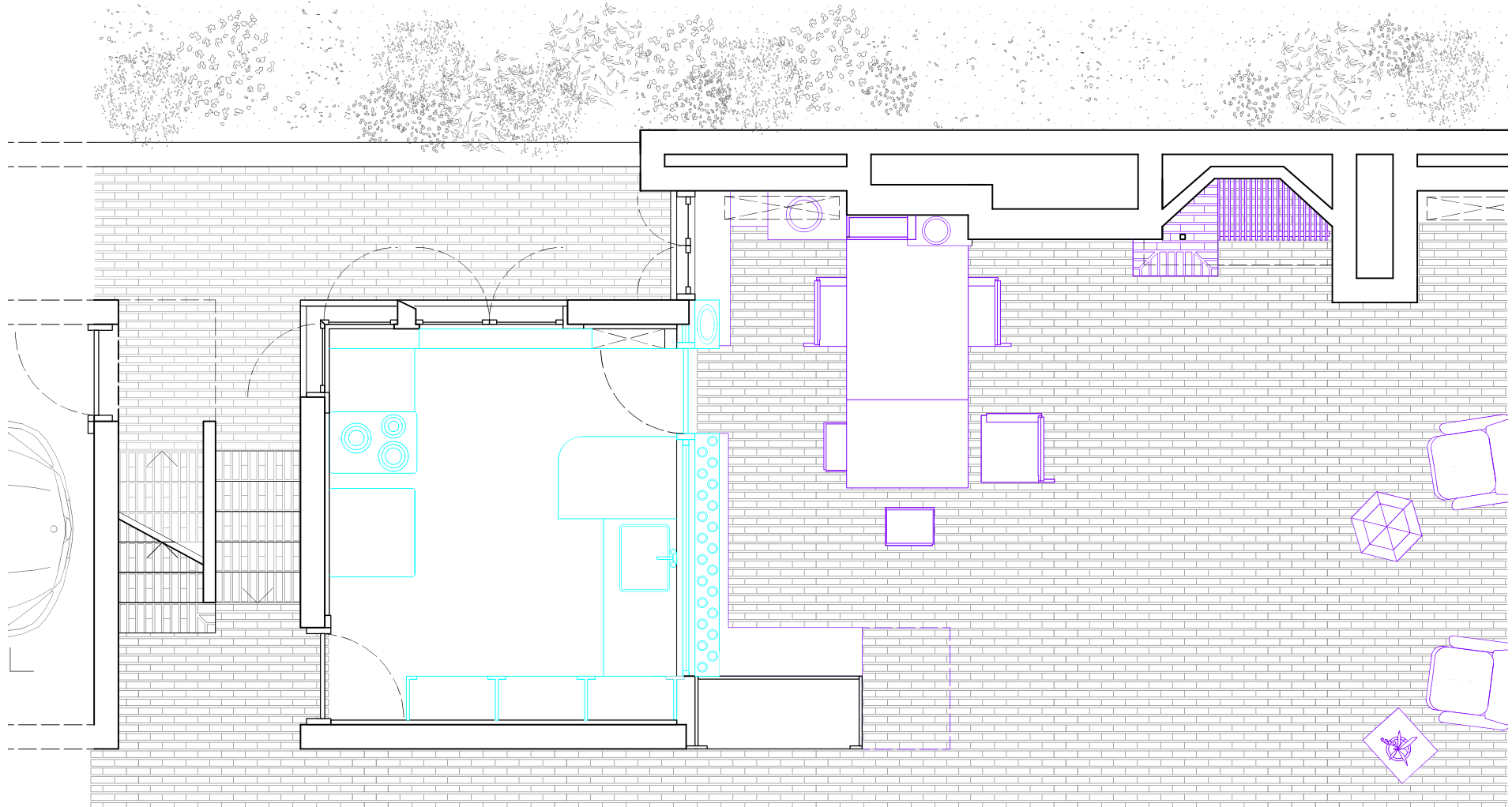


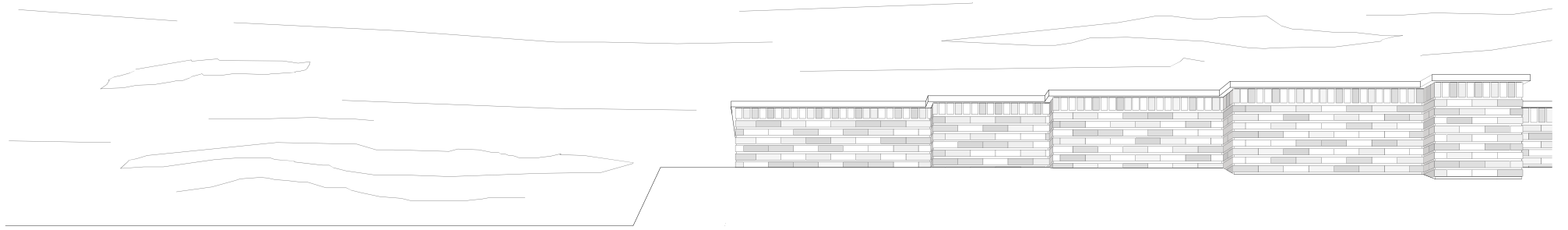
Section CC'

Analysis : Malcolm Willey House - Frank Lloyd Wright

In 1932, Malcolm and Nancy Willey rejected Frank Lloyd Wright's initial design due to budget constraints during the Great Depression. As servant-based domestic layouts became obsolete. Central to this redesign was the open kitchen, or "workplace".

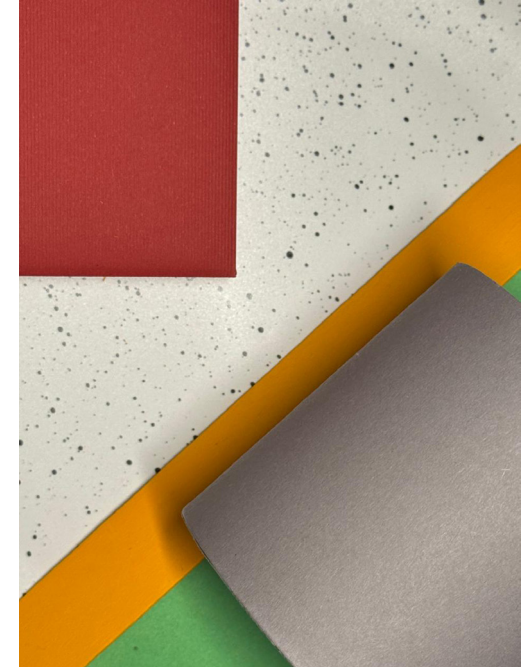
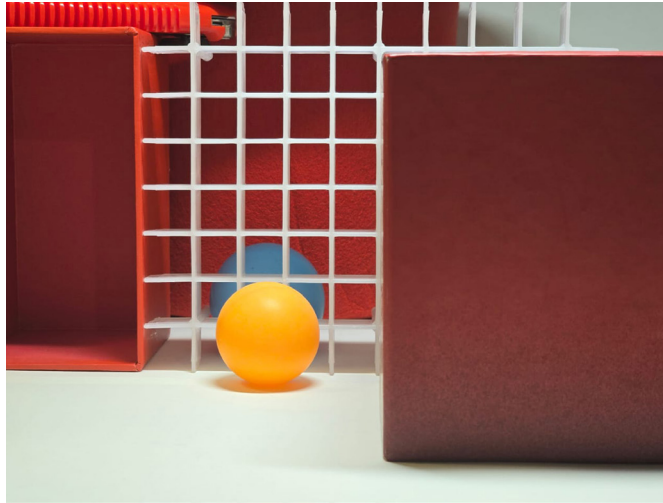
Although often seen as an early example of the open kitchen, Wright still maintains a clear separation from the living space. Shelving and objects partially obscure the large window, while elements like the Dutch door reinforce this boundary. Functional surfaces—such as the countertop, oven, and sink—are kept out of sight, and material changes further define the threshold. Even Wright's term "workplace" suggests a space that remains distinct rather than fully exposed.





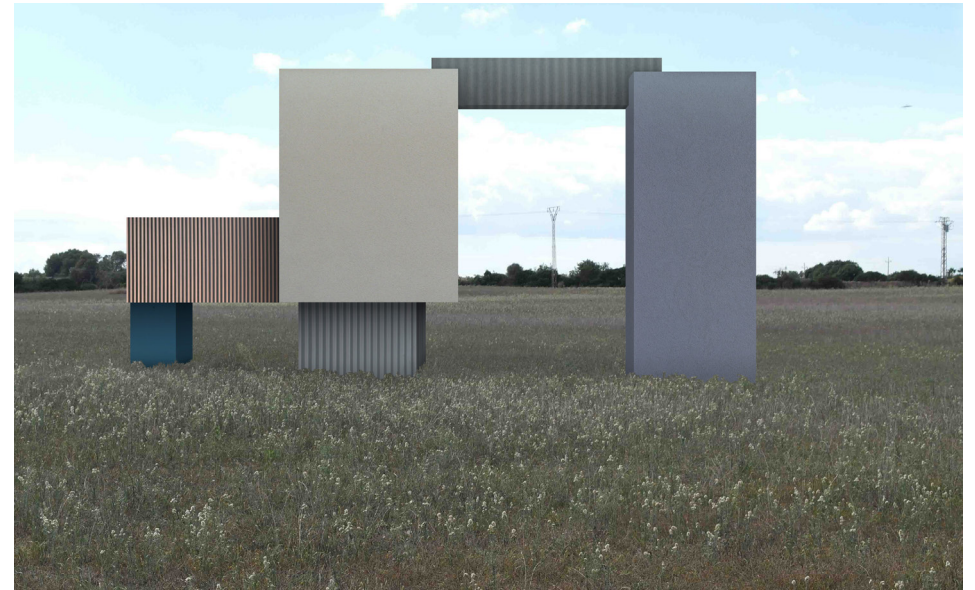
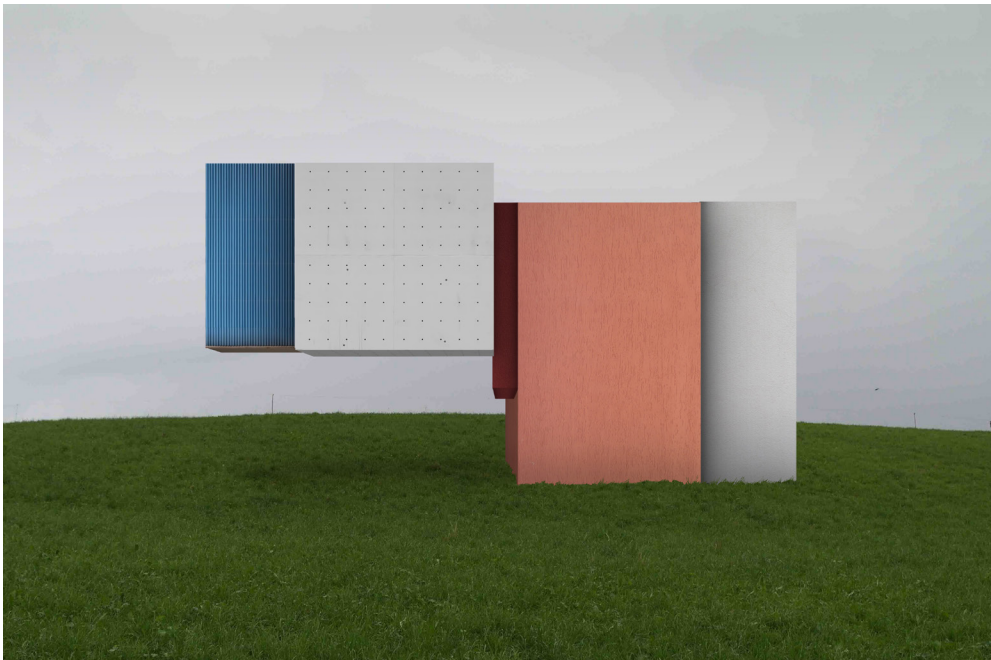
Still life ...

This series of photographs was made by using everyday life objects, arranged in a specific way. The photographs were taken in a way that confused the viewer. They seem to be without any scales or materiality

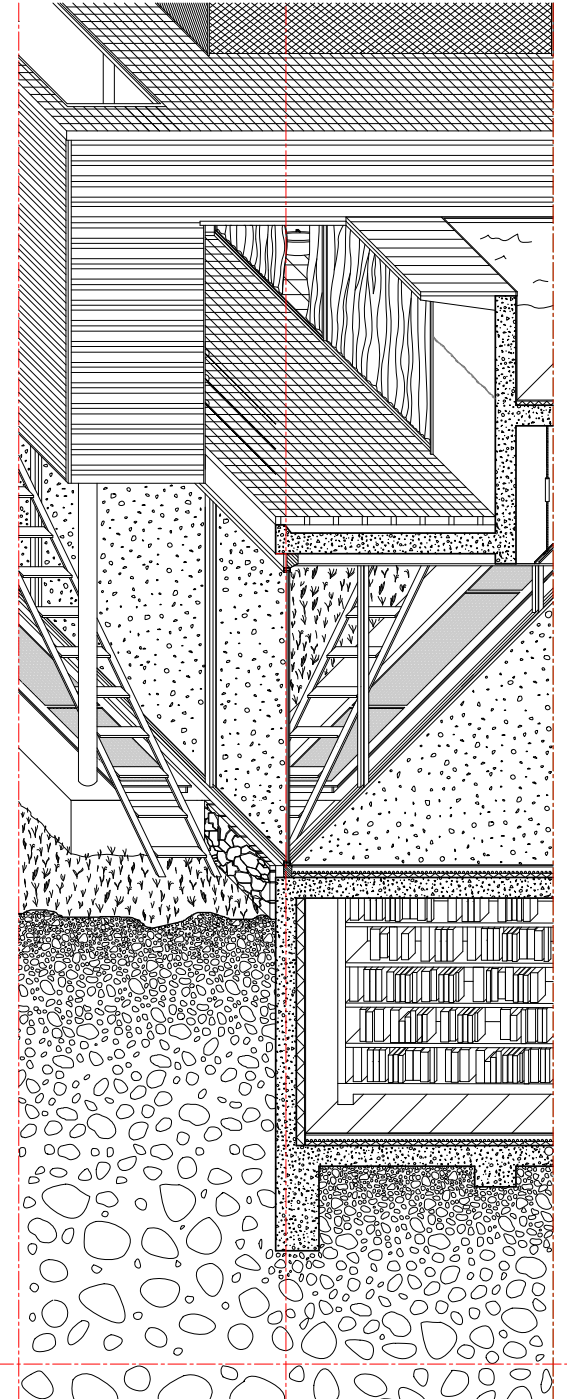
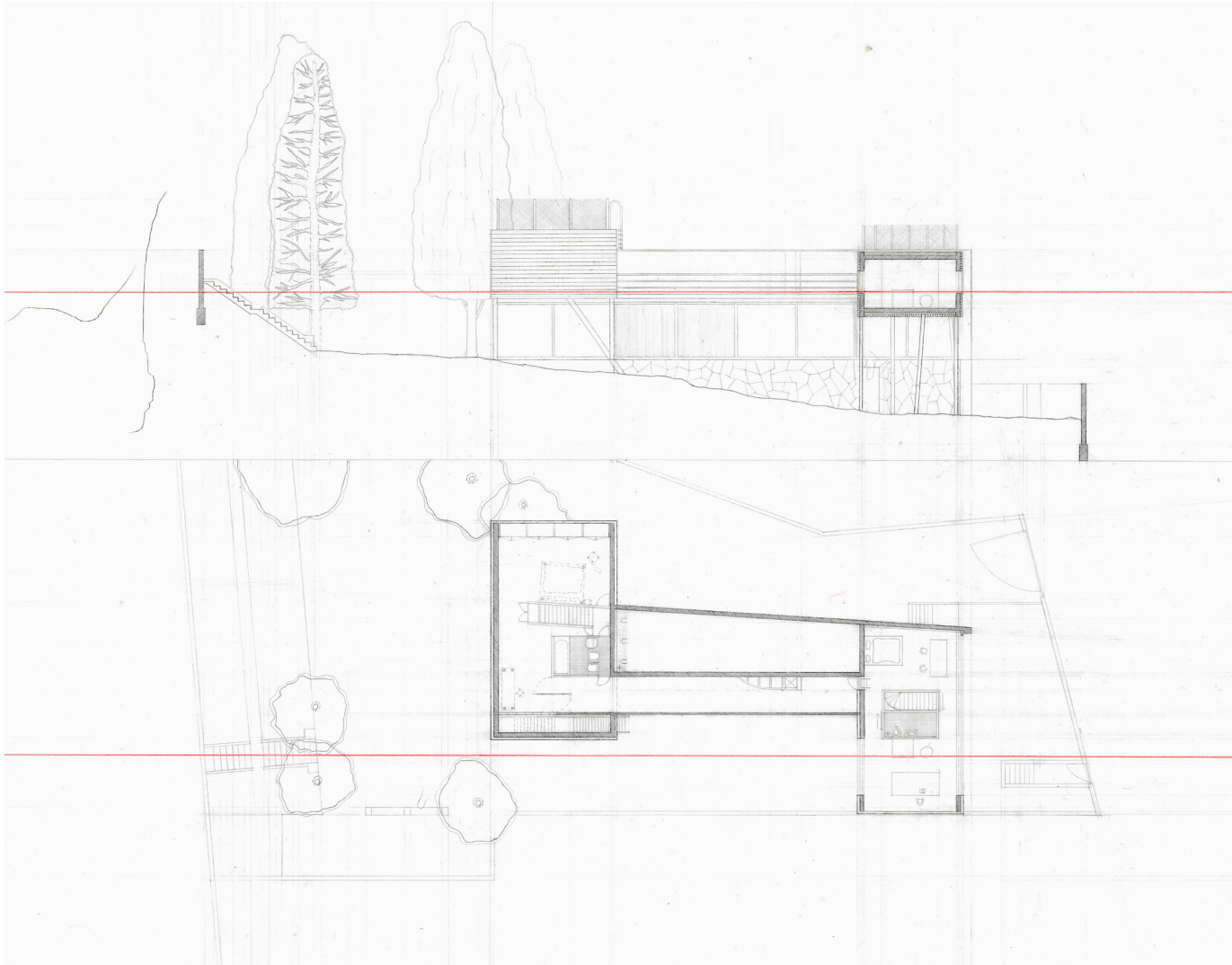


... and compositions

These two images were developed through a process inspired by the work of Piet Mondrian. The compositions were first drawn, then assigned tonal values using textured cardboard, followed by the application of color and surface texture. The final images were integrated into photographic depictions of natural scenes. The entire process was carried out using Photoshop.



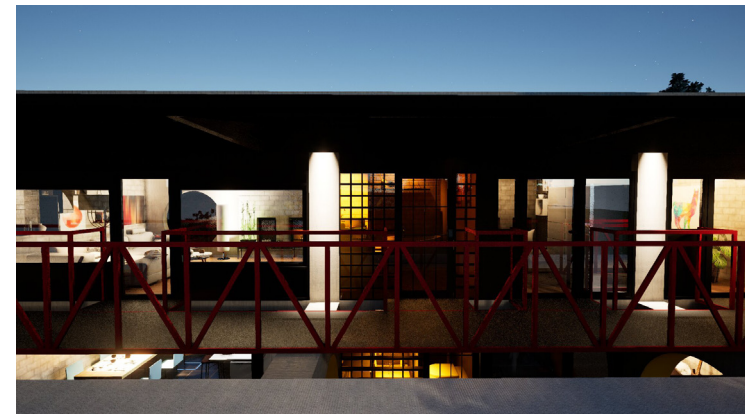
Analysis : Villa Dall'Ava - Rem Koolhaas



A reimagining of Villa Le Sextant by Le Corbusier.

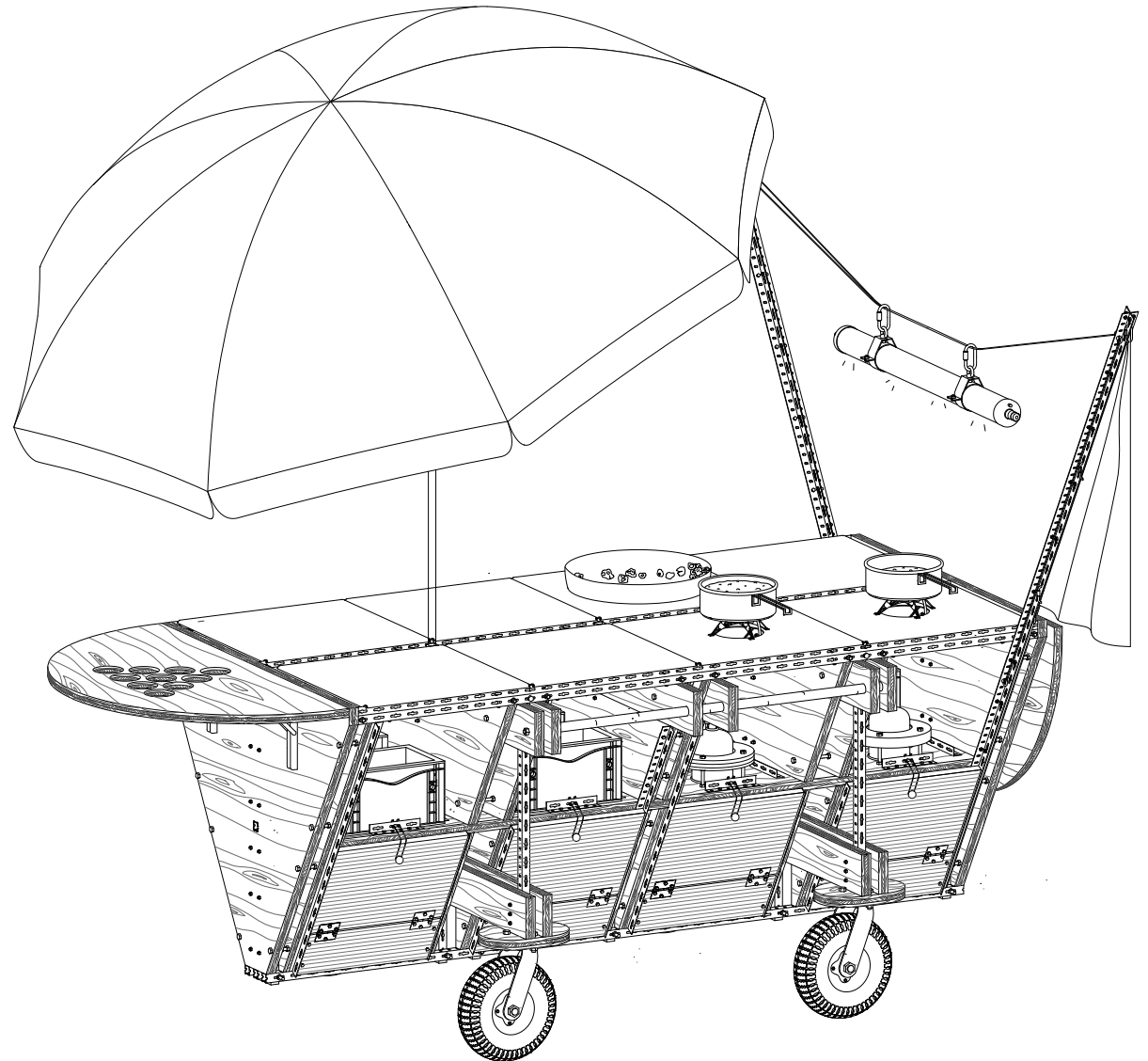
This reinterpretation of Le Corbusier's Villa Le Sextant draws direct inspiration from the work of Mario Botta. The use of simple geometric forms in the original project informed our approach, with Botta's architectural language offering a complementary reinterpretation.

The 3D model of the existing villa was developed in Archicad, while most modifications were also carried out within the same software. More complex elements, such as the circular skylight, were modeled in Rhino before being integrated into Archicad. The final renderings—including materials and furniture—were produced using Twinmotion.



The Tablar ...

The final project of our first year involved mobilizing all first-year EPFL students to Geneva for just over a week to build their projects on site. Our studio aimed not only to activate the site—with the project intended to be donated to a migrant housing association—but also to enrich the construction period itself. The table functions as a mobile kitchen, while the screen creates a space for gatherings, serving both the student group during the week and the residents in the long term.



... and the cinema screen

